



# Tafe Master Series

Industrial Education Workstations





# Contents

|                              |    |
|------------------------------|----|
| Workbenches .....            | 3  |
| Metal-work Bench .....       | 5  |
| Wood-work Bench .....        | 6  |
| Actiwork Hexagon Bench ..... | 7  |
| Automotive Workbench .....   | 8  |
| Oil Master .....             | 9  |
| Why Choose ACTIWORK .....    | 11 |



## Suggested Specification

- The Bench shall be of the Tafe Master Series range as designed and manufactured by ACTIWORK Workplace Ergonomics.
- The table shall be finished in a rust resistant powdercoat
- The table shall be the Ergonomic Tafe Master Series of ACTIWORK only
- The Table top shall be of the ACTIWORK Section





## The answer to education centre requirements

'Workshop' worktables are designed for the most demanding use and environments. Mechanical workshops, garages, and heavy industry are environments where chemicals, heavy loads, and strenuous use necessitate robustness.

These worktables are very durable and withstand the toughest conditions. There is a wide range of accessories available. The Workshop table is guaranteed for regular with loads up to 750 kg.





# Metal Work Benches



## Oxy Cutting Bench

TFS812

W=530mm, D=530mm, H=880mm

- Removable s/s support bars
- Hold down brackets
- Ventilated
- Removable waste tray

## Oxy Welding Bench

TFS813

W=620mm, D=620mm, H=880mm

- Fire resistant filled top



## Quench Tank

TFS816

W=530mm, D=530mm, H=880mm

- Drain Plug
- Waste Tray



## MIG/TIG Welding Bench

TFS815

W=1000mm, D=750mm, H=900mm

- Heavy folded top
- Tool/Job holder





## Grinding Bench

TFS814

W=1000mm, D=500mm, H=1800mm

- Ventilated
- Removable waste tray
- Noise absorbent fire proof surround

- Complete Solution
- Ventilation Arms
- Chairs/Stools
- Benches
- Hardware



- Sound Reduction Rooms





# Wood Work Benches



TFS812

W=530mm, D=530mm, H=880mm

- Laminated ply construction
- Steel frame
- 4 Woodwork vices
- Sacrificial centre sheet
- 750 kg capacity

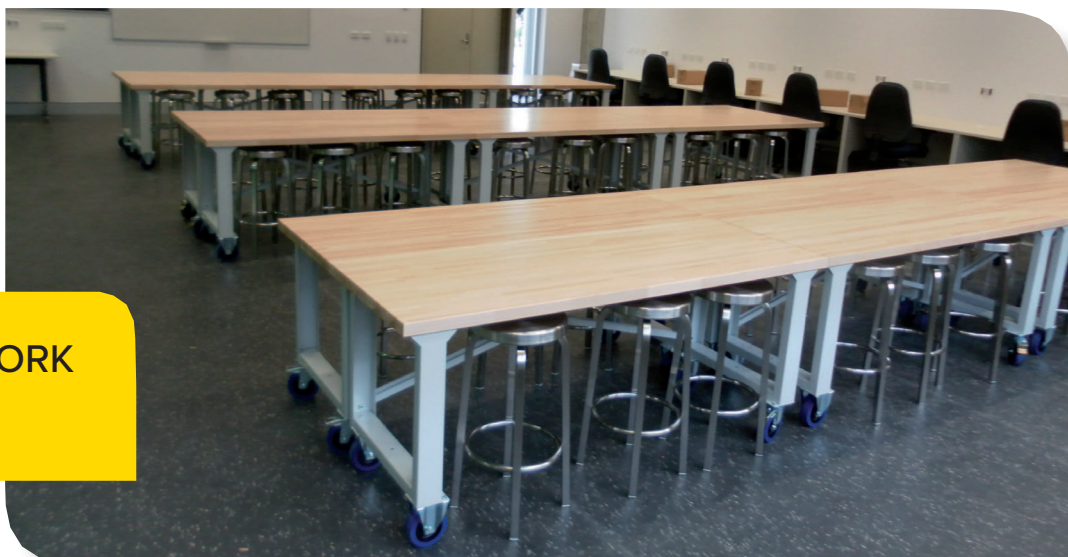


TFS812

W=530mm, D=530mm, H=880mm

- 2 Drawer units
- Back board
- 100 kg capacity

**Standard ACTIWORK  
Work Bench**





# The ACTIWORK Hexagon Bench



MG9019

W=2500mm, D=2165mm, H=850mm

## Features

- 6 Storage Cabinets (G Series - see page 8)
- 6 Pneumatic Outlets
- 16 240V 100amp Outlets
- 6 Bench Mounted
- Laminated Timber or Steel Top





# Automotive Work Bench



Stainless Steel Top Bench Cabinet Combo



Mobile Cabinet Combo



Urphen Top Work Bench with Hob



Stainless Steel Top Bench with 'wet edge'

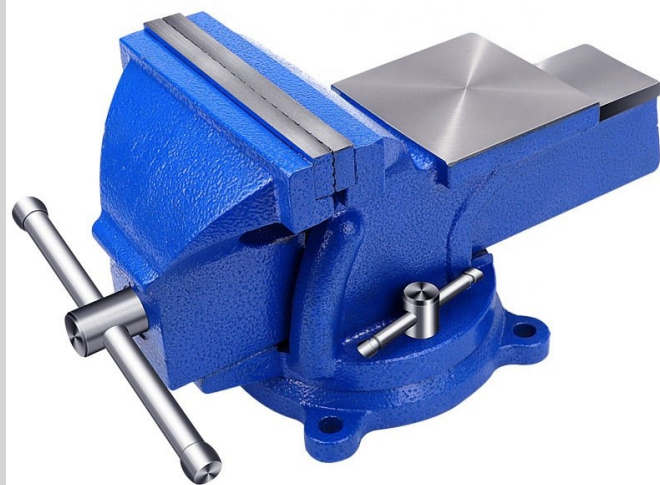


# Oil Master



Oil Drain Bunded  
Work Bench

- Bonded with drain tap brackets
- Easy access to bond
- Optional vice and filter holders



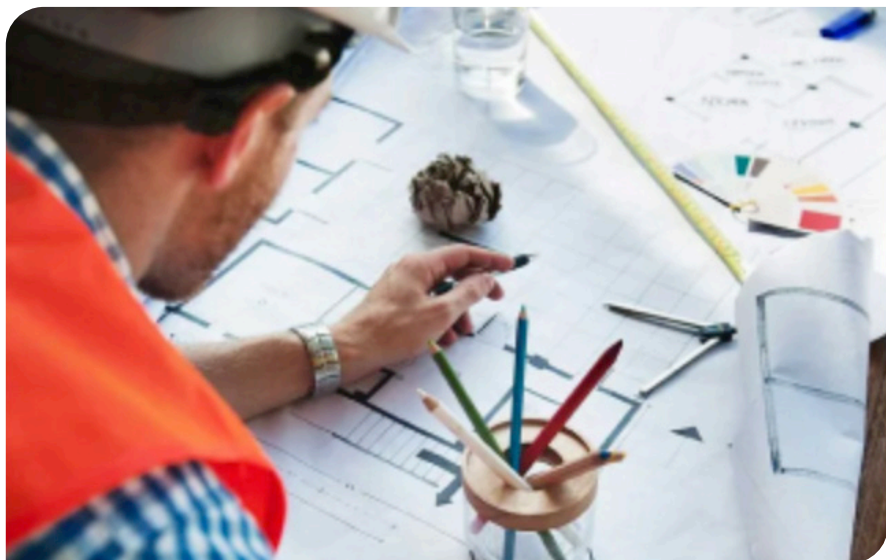
| Part No. | Size               |
|----------|--------------------|
| MG9016   | 1000 x 800 x 870 H |
| MG9015   | 1500 x 800 x 870 H |
| MG9014   | 2000 x 800 x 870 H |
| MG9013   | 2500 x 800 x 870 H |

## Suggested Specification

- The Bench shall be of the Oil Master Series range as designed and manufactured by ACTIWORK Workplace Ergonomics.
- The table shall be finished in a rust resistant powder coat
- The table shall be the Oil Master Series of ACTIWORK only
- The Table top shall be of the ACTIWORK Section

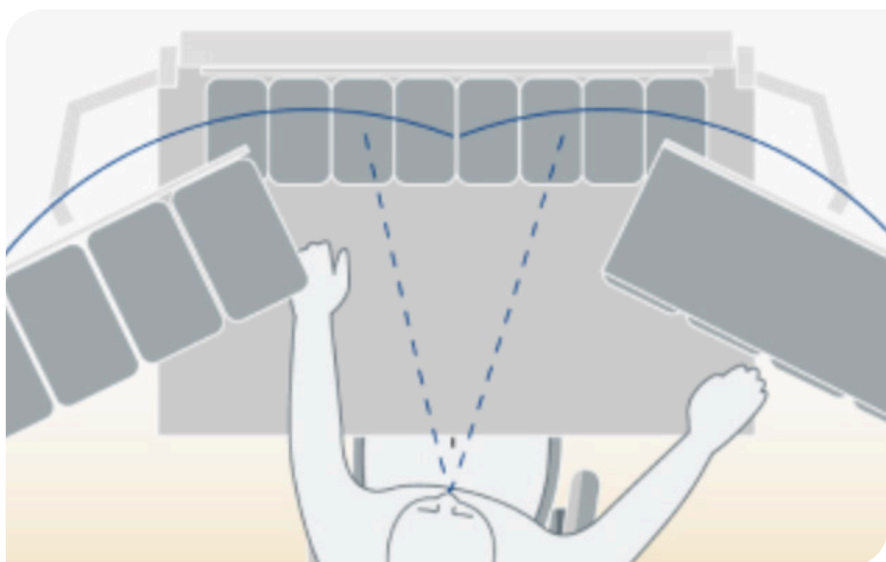


# //// Why Choose ACTIWORK?



## / Customised Solutions

No two customers have the same requirements. We customised our products and solutions to suit your business.



## / Ergonomics In Action

ACTIWORK Workplaces are designed to bring the human factor into your workspace.



## / Aussie Made & Supported

ACTIWORK not only supports the concept of Australian Made, but we use it wherever possible.





## / The Workplace Experts

ACTIWORK is a leading manufacturer and importer of industrial workstations and furniture. We provide industrial furniture and workstation solutions that enable our customers to secure their efficiency.

ACTIWORK Workshop solutions increase your workers' productivity, thereby increasing performance and ultimately leading to higher business profitability.

## / Our Process

Knowledge is the most essential ingredient, Our team handles everything from planning to launch - that's why our clients look so rested.

ACTIWORK sees the key feature of today's Business requirements and is offering solutions in a complete process, starting with design of products, custom suited to customer's needs, design and layout of workshops, factories, process lines and offices.

## / At ACTIWORK, Safety is Everything

We believe in an Incident and injury free environment on all work-sites and when manufacturing our products.

ACTIWORK Consistently strives to meet or exceed all safety laws and regulations wherever we are to ensure our employees are able to arrive home each night safe and sound process lines and offices.

# //// Contact ACTIWORK

5 Rosella St, Singleton NSW 2330, Australia  
1300 892 397  
[sales@actiwork.com.au](mailto:sales@actiwork.com.au)